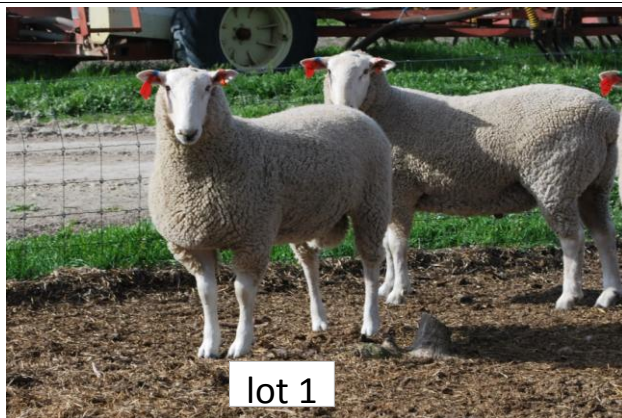
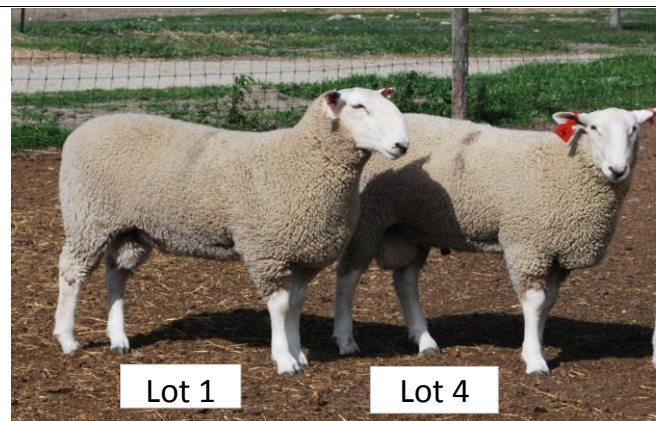
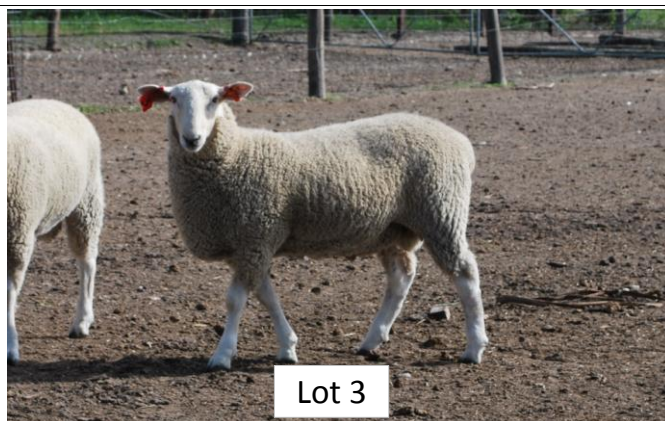


BORDER LEICESTER

LOT	ID	SIRE	BWT	WWT	PWWT	YWT	PFAT	PEMD	NLW	MWWT	INDEX	SB	MN2	PURCHASER
1	0171	120288	0.4	6.9	9.9	12.3	-0.4	0.2	6%	0.7	124.3	\$		
2	0299	120288	0.4	7.1	10.6	11.2	-0.7	0.5	8%	1.1	128.7	\$		



3	0145	110052	0.3	6.8	10.5	11.8	-0.5	1.2	7%	0.5	129.0	\$		
4	0231	110052	0.2	4.6	8.0	9.5	-0.1	0.7	9%	0.6	124.0	\$		



LOT	ID	SIRE	BWT	WWT	PWWT	YWT	PFAT	PEMD	NLW	MWWT	INDEX	SB	MN2	PURCHASER
5	4704	060369	0.5	5.8	8.3	10.1	-0.5	0.1	10%	1.1	125.0	\$	MN2	
6	4773	110551	0.0	2.1	3.8	4.0	-0.3	0.4		1.8	112.5		MN2	
7	4747	133437	0.3	4.0	5.9	7.4	-0.1	-0.3	6%	0.4	114.6		MN2	
8	4767	133437	0.2	3.3	4.7	4.4	-0.1	0.6	6%	0.8	115.9	\$	MN2	
9	0204	090225	0.3	4.7	7.6	8.4	-0.8	-0.6	6%	1.4	119.4	\$		
10	0302	110052	0.3	5.7	9.3	11.4	-0.4	0.5	7%	1.3	126.1	\$		
11	0162	120116	0.6	7.6	10.8	12.7	-0.7	0.0	4%	1.4	125.2	\$		
12	0220	120116	0.6	7.5	10.5	14.0	-0.9	-0.3	3%	1.6	123.7	\$		
13	4709	060369	0.5	6.3	7.7	10.4	-0.4	-0.5	7%	1.3	119.8	\$	MN2	
14	4706	060369	0.4	5.2	6.7	8.9	-0.6	-0.1	10%	1.0	121.7	\$	MN2	
15	4782	100009	0.2	4.1	7.6	11.9	-0.2	0.2	1%	0.7	115.9	\$	MN2	
16	4746	133437	0.3	3.9	5.8	8.0	0.1	-0.3	6%	0.4	114.4		MN2	
17	0180	111119	0.3	6.0	8.7	11.2	-0.7	-0.1	6%	1.8	123.8	\$		
18	0161	110093	0.4	5.9	9.8	12.6	-0.8	-0.2	7%	1.3	125.3	\$		
19	0185	120116	0.6	7.3	12.1	15.7	-0.6	-0.1	3%	0.9	124.9	\$		
20	0149	120135	0.2	5.7	8.1	9.0	-0.2	0.6	1%	0.5	118.4	\$		

LOT	ID	SIRE	BWT	WWT	PWWT	YWT	PFAT	PEMD	NLW	MWWT	INDEX	SB	MN2	PURCHASER
21	4753	100009	0.2	4.6	5.8	5.7	-0.3	1.4	1%	0.9	116.8	\$	MN2	
22	4757	100009	0.3	5.8	7.3	10.2	-0.5	0.8	1%	1.4	119.0	\$	MN2	
23	4798	060369	0.5	6.7	8.5	9.6	-0.2	0.0	6%	1.1	121.5	\$	MN2	
24	4739	100009	0.2	4.9	7.1	11.3	-0.2	0.6	1%	1.1	117.6	\$	MN2	
25	0216	120135	0.3	5.2	7.7	9.4	-0.6	0.3	5%	0.0	114.8			
26	0183			0.3	1.4	2.5	1.3				105.4			
27	0213	120116	0.7	8.5	11.9	16.2	-0.8	-0.2	6%	1.3	128.0	\$		
28	0160	120116	0.6	7.7	12.2	18.7	-0.6	-0.4	2%	0.6	123.7	\$		
29	0218	110093	0.3	6.2	9.8	12.9	-0.4	0.4	10%	1.1	128.4	\$		
30	0178	120135	0.4	5.7	9.2	11.5	-0.2	0.5	-1%	1.3	119.5	\$		
31	0195	100606	0.4	5.7	8.9	13.4	-0.4	0.6	6%	0.5	123.5	\$		
32	0191	110093	0.2	3.9	5.9	7.7					116.5	\$		
33	0229	110052	0.2	4.9	7.6	8.5	-0.2	0.6	6%	0.2	119.9	\$		
34	0222	090225	0.3	4.8	7.2	9.0	-0.8	0.0	7%	1.5	121.2	\$		
35	0157	120116	0.6	7.3	10.3	13.9	-0.5	-0.4	3%	1.6	122.6	\$		
36	0184	090225	0.1	3.3	5.8	7.4	-0.8	-0.2	4%	1.0	115.2			

LOT	ID	SIRE	BWT	WWT	PWWT	YWT	PFAT	PEMD	NLW	MWWT	INDEX	SB	MN2	PURCHASER
37	0192	111119	0.3	6.4	6.6	10.0	-1.2	-0.4	5%	1.5	118.1	\$		
38	0293	090225	0.4	5.6	8.2	9.8	-0.8	0.2	8%	0.7	123.5	\$		
39	4705	060369	0.4	3.8	6.3	7.9	-0.3	0.2	10%	1.1	121.6	\$	MN2	
40	4775	12Q043	0.4	4.5	6.3	9.8	-1.3	-1.3	3%	0.2	111.1		MN2	
41	4759	100159	0.2	3.3	4.9	5.6	-0.7	-1.0	4%	0.9	110.7		MN2	
42	4703	110551	0.2	2.6	4.5	5.1	-0.7	-0.4	2%	0.9	110.9		MN2	
43	0147	120135	0.2	4.8	7.1	8.7	0.1	1.1	1%	1.0	118.1	\$		
44	0167	120116	0.5	6.1	8.5	11.2	-0.7	-0.8	9%	0.7	121.5	\$		
45	0176	110052	0.1	4.2	7.1	9.1	-0.3	0.9	5%	0.7	120.2	\$		
46	0132	110052	0.3	4.8	8.0	8.1	-0.2	0.3	7%	0.6	121.4	\$		
47	0128	120288	0.4	5.8	8.6	11.2	-0.3	0.7	7%	0.5	124.1	\$		
48	0153	100606	0.3	6.3	10.6	14.8	-0.8	0.0	8%	0.4	126.6	\$		
49	0209	120135	0.3	5.8	8.4	9.4	-0.5	0.8	6%	0.5	123.5	\$		
50	0131	111119	0.2	4.8	6.8	8.2	-0.9	-0.7	5%	0.4	115.4			
51	0133	120116	0.4	5.8	7.9	9.9	-0.5	0.0	5%	0.8	119.5	\$		
52	0482	110052	0.3	5.5	8.2	9.9	-0.3	1.0	4%	0.8	122.1	\$		

LOT	ID	SIRE	BWT	WWT	PWWT	YWT	PFAT	PEMD	NLW	MWWT	INDEX	SB	MN2	PURCHASER
53	4791	100159	0.3	3.9	6.2	7.3	-0.5	-0.5	-1%	1.2	111.4		MN2	
54	4694	110551	0.2	2.0	4.8	4.8	-0.3	-0.3	-2%	0.7	107.6		MN2	
55	4772	110551	0.0	0.9	2.4	2.3	-0.3			1.8	109.2		MN2	
56	4755	100009	0.2	5.8	5.4	5.4	-0.5	0.9	5%	0.9	118.1	\$	MN2	
57	0561	110093	0.1	3.8	5.7						115.9	\$		
58	0141	120288	0.4	7.1	9.9	12.6	0.3	1.4	10%	1.8	131.7	\$		
59	0297	111119	0.2	6.4	7.8	9.9	-0.8	0.1	3%	0.9	118.8	\$		
60	0474	100606	0.3	4.4	7.2	9.2	-0.2	0.8	8%	0.4	121.9	\$		
61	0135	120135	0.3	5.3	7.7	9.6	-0.3	0.6	1%	1.0	118.2	\$		
62	0129	111119	0.3	5.1	7.5	8.6	-0.4	0.5	8%	1.2	123.1	\$		
63	0473	090225	0.4	5.3	7.9	9.2	-1.1	-0.4	7%	1.5	121.6	\$		
64	0155	120116	0.5	6.8	9.5	12.4	-0.6	-0.4	6%	1.2	123.2	\$		
65	0146	110052	0.0	3.3	5.9	6.9	-0.3	0.7			115.7	\$		
66	0194	100606	0.3	4.8	8.1	10.8	0.1	0.9	10%	0.4	125.3	\$		
67	Details sale day												MN2	
68	4736	133437	0.1	3.3	5.5	7.6	-0.1	-0.2	5%		114.1		MN2	

LOT	ID	SIRE	BWT	WWT	PWWT	YWT	PFAT	PEMD	NLW	MWWT	INDEX	SB	MN2	PURCHASER
69	4720	110551	0.2	2.1	4.1	5.0	-0.9	0.3	6%	1.3	116.0	\$	MN2	
70	4756	100009	0.3	5.1	5.8	7.0	-0.8	0.7	1%	1.4	116.5	\$	MN2	
71	0158	110052	0.2	4.1	6.4	8.0	-0.5	0.3	8%	0.4	119.3	\$		
72	0164	111119	0.3	5.7	6.3	7.5	-1.1	-0.8	10%	1.4	120.0	\$		
73	0298	090225	0.4	5.3	6.9	7.9	-0.6	-0.2	6%	1.0	118.7	\$		
74	0144	110052	0.0	3.7	6.5	8.5	-0.2	0.9			117.5	\$		
75	0173	111119	0.2	4.1	5.3	7.4	-0.7	-0.1	4%	0.7	114.0			
76	0230	120116	0.5	6.8	8.1	10.6	-0.7	-0.4	6%	1.1	120.4	\$		
77	0477	110093	0.4	5.8	9.1	11.8	-0.6	-0.2	8%	1.2	124.2	\$		
78	0214	100606	0.4	4.7	8.2	11.4	-0.2	0.4	10%	0.9	124.6	\$		
79	0136	110052	0.1	4.1	7.3	9.7	-0.1	0.9	9%	0.8	124.2	\$		
80	0212	120135	0.2	5.0	6.6	7.6	-0.2	0.7	0%	1.1	116.2	\$		
81	0124	120116	0.2	4.7	6.3						113.0			
82	0130	120288	0.3	4.5	8.1	9.5	-0.2	0.4	11%	1.2	125.7	\$		
83	0294	110052	0.2	4.1	6.2	7.6	0.0	1.2	8%	0.3	120.7	\$		
84	0190	110093	0.1	3.9	6.5	9.1	0.5	0.9			118.9	\$		

LOT	ID	SIRE	BWT	WWT	PWWT	YWT	PFAT	PEMD	NLW	MWWT	INDEX	SB	MN2	PURCHASER
85	0239	120116	0.6	7.1	7.7	8.5	-0.6	-0.4	6%	1.4	120.0	\$		
86	4687	110551	0.0	1.8	2.8	2.3	-0.4	-0.3			108.4		MN2	
87	4754	100159	0.4	5.7	8.0	10.2	-0.5	0.1	6%	1.0	121.7	\$	MN2	
88	4693	110551	0.2	1.3	3.7	3.2	-0.1	0.0	-2%	0.7	106.3		MN2	
89	4758	133437	0.2	3.0	4.1	4.8	-0.1	0.4	3%	1.0	112.5		MN2	
90	4718	110551	0.3	1.8	4.6	5.0	-0.2	0.1	-1%	0.6	108.9		MN2	
91	4796	060369	0.3	3.4	6.5	8.6	0.3	0.2	6%	0.5	117.2	\$	MN2	
92	4785	110551	0.2	1.9	3.7	2.9	-0.4	0.2	0%	1.6	110.2		MN2	
93	0169	120135	0.2	4.4	6.5	7.0	0.2	0.9	1%	0.8	116.1	\$		
94	0233	120135	0.3	4.9	6.7	8.0	-0.4	0.4	1%	0.8	115.6	\$		
95	0475	090225	0.1	2.6	4.1	4.7	-0.9	0.0	4%	0.8	112.4			
96	0366	100606	0.3	5.7	10.4	13.5	-0.2	0.9	8%	0.1	127.2	\$		
97	0168	120116	0.6	7.6	9.5	13.2	-0.9	-1.3	0%	1.0	116.0	\$		
98	0295	100606	0.2	4.0	5.5	8.4	-0.3	0.4	5%	1.0	116.5	\$		
99	0197	120288	0.4	5.3	7.6	9.6	-0.5	0.6	10%	1.8	126.3	\$		
100	0443	100606	0.4	5.1	8.7	11.2	0.2	1.0	11%	0.3	127.1	\$		

LOT	ID	SIRE	BWT	WWT	PWWT	YWT	PFAT	PEMD	NLW	MWWT	INDEX	SB	MN2	PURCHASER
101	4710	100009	0.4	3.0	3.7	4.1	-0.2	0.6	2%	0.9	111.6		MN2	
102	4788	110551	0.4	3.9	5.4	6.3	-0.7	-0.6	8%	1.7	117.0	\$	MN2	
103	4790	100159	0.1	2.5	4.0	4.5	0.1	0.4	1%	0.2	108.8		MN2	
104	0175	120116	0.5	6.0	7.4	8.4	-0.4	0.1	7%	1.0	120.6	\$		
105	0205	120116	0.3	4.3	6.9	8.8	-0.3	-0.2	5%		117.1	\$		
106	0206	100606	0.3	3.7	5.4	7.1	0.1	1.3	7%	0.5	119.4	\$		
107	0127	100606	0.5	5.1	8.3	9.0	-0.3	0.6	12%	0.6	126.7	\$		
108	4716	100009	0.0	3.0	4.0	4.9	0.1	0.8	1%	0.8	111.9		MN2	
109	4691	110551	0.3	3.1	5.0	4.9	-1.1	-0.2	6%	1.4	116.5	\$	MN2	
110	4740	100009	0.2	4.2	5.3	6.9	-0.1	0.8	0%	0.2	112.8		MN2	
111	4786	100009	0.3	4.7	6.1	7.5	-0.4	0.6	5%	0.3	117.5	\$	MN2	
112	4696	110551	0.3	2.3	4.4	4.3	-0.8	0.5	5%	1.3	116.6	\$	MN2	
113	0221	110052	0.3	4.4	6.5	7.8	-0.5	0.8	8%	0.7	121.4	\$		
114	0187	090225	0.3	4.4	6.4	7.4	-0.6	-0.1	7%	0.9	117.9	\$		
115	0143	120116	0.3	5.8	6.6	7.7	-0.7	0.0	-1%		114.7			
116	0154	120288	0.4	4.9	7.5	8.8	-0.3	0.4	14%	0.6	126.2	\$		

LOT	ID	SIRE	BWT	WWT	PWWT	YWT	PFAT	PEMD	NLW	MWWT	INDEX	SB	MN2	PURCHASER
117	0281	120288	0.4	6.1	8.7	10.8	-0.4	0.4	7%	0.5	123.4	\$		
118	0165	110093	0.4	5.5	6.7	7.2	-0.5	0.6	6%	1.5	121.4	\$		
119	0182	120135	0.2	3.8	5.6	7.5	-0.6	0.4	2%	0.4	114.3			
120	0208	100606	0.4	5.1	8.1	9.9	-0.7	0.1	9%	0.2	123.2	\$		
121	0126	120135	0.3	4.7	9.0	10.8	-0.2	0.6	1%	0.7	119.9	\$		
122	0196	120116	0.4	5.3	6.7	8.5	-0.4	0.4	3%	0.9	116.8	\$		
123	0478	100606	0.1	3.2	5.5	7.8	-0.1	0.9	5%	0.7	117.4	\$		
124	0199	090225	0.1	2.5	3.4	1.7	0.3	0.5	6%	0.4	112.4			
125	0217	110052	0.3	5.8	8.4	8.9	-0.5	0.4	9%	0.2	123.5	\$		
126	0138	110093	0.4	6.1	7.4	8.9	-1.1	-0.2	8%	1.1	121.8	\$		
127	4766	133437	0.2	2.4	4.1	4.4	0.0	0.1	6%	0.8	113.3		MN2	
128	4727	11P150	0.2	1.9	3.5	2.9	-0.4	-0.2	9%	0.1	112.5		MN2	
129	4741	100009	0.1	2.7	3.4	4.6	0.0	0.9	0%	0.2	109.3		MN2	
130	4784	110551	0.0	0.8	3.3	2.3	-0.3	0.5		1.9	112.0		MN2	
131	0476	100606	0.1	2.2	4.0	5.9	0.1	0.8	5%	0.5	113.7			
132	0211	110052	-0.1	1.9	3.7	4.0	0.0	0.7			111.0			

LOT	ID	SIRE	BWT	WWT	PWWT	YWT	PFAT	PEMD	NLW	MWWT	INDEX	SB	MN2	PURCHASER
133	0235	111119	0.1	3.0	4.5	5.7	-0.5	0.2	8%	1.2	117.1	\$		
134	0150	110093	0.2	4.5	6.2	7.3	-0.6	0.3	7%	0.9	119.6	\$		
135	0219	110052	0.3	4.0	5.7	6.7	-0.2	1.2	10%	0.8	123.0	\$		
136	Details sale day													
137	0163	110093	0.4	6.1	8.1	10.7	-0.7	0.0	8%	1.1	123.0	\$		
138	0223	090225	0.4	5.0	6.9	7.4	-0.9	-0.1	7%	0.9	119.2	\$		
139	0202	110052	0.2	4.9	7.2	8.8	-0.4	0.6	7%	0.7	121.4	\$		
140	0224	120116	0.5	6.0	7.4	9.1	-0.5	-0.5	5%	0.9	117.5	\$		

POLL DORSETS

LOT	ID	SIRE	BWT	WWT	PWWT	PFAT	PEMD	Carcass plus	Lamb 2020	MN2	PURCHASER
141	011	100481	0.4	8.7	13.8	-0.5	1.6	188.9	111.9		
142	258	120254	0.5	11.7	17.5	-0.6	1.7	210.7	114.9		
143	020			5.8	8.8	-0.4	2.4	172.6	0.0		
144	091	100481	0.2	7.7	12.4	0.1	1.8	181.2	110.9		
145	031	120254	0.6	9.4	13.7	-0.3	2.1	194.8	112.7		
146	005	120254	0.4	8.1	12.5	-0.4	1.7	183.7	111.2		
147	094	100481	0.4	8.3	13.9	-0.5	1.4	186.7	111.6		
148	064	100481	0.4	8.8	14.6	-0.3	1.8	193.3	112.5		
149	055	100481	0.4	8.8	14.2	-0.2	1.6	189.2	112.0		
150	008	120254	0.3	8.1	12.2	-0.6	1.5	181.0	110.9		
151	066	080238	0.2	6.5	10.7	-0.1	2.0	176.0	110.2		
152	019	120254	0.4	8.1	11.6	-0.4	1.9	182.4	111.1		
153	246	080238	0.3	7.3	11.8	-0.5	1.0	171.3	109.6		
154	268	080238	0.4	8.2	13.4	-1.2	0.8	180.2	110.8		
155	002	080238	0.5	7.2	11.9	-0.7	1.1	174.3	109.9		

LOT	ID	SIRE	BWT	WWT	PWWT	PFAT	PEMD	Carcass plus	Lamb 2020	MN2	PURCHASER
156	076	120254	0.4	8.4	12.3	-0.3	2.3	190.1	112.1		
157	051	100481	0.4	8.5	13.7	-0.4	1.2	183.2	111.2		
158	099	100481	0.4	8.1	12.8	-0.2	1.1	176.8	110.3		
159	070			4.5	7.2	-0.7	1.1	150.8	0.0		
160	121	100481	0.3	7.6	11.9	-0.5	1.3	176.0	110.2		
161	045	100481	0.3	8.7	13.3	-0.2	1.4	183.5	111.2		
162	062	120254	0.3	8.4	12.1	-0.4	1.8	183.8	111.3		
163	035	100481	0.3	7.6	12.1	-0.3	1.6	179.3	110.6		
164	082	100481	0.4	8.4	13.0	-0.5	0.9	178.1	110.5		
165	043	080238	0.4	6.6	11.2	-0.8	1.2	171.5	109.6		
166	303		0.2	7.9	12.0			0.0	0.0		
167	095	100481	0.4	7.4	11.7	-0.1	1.6	176.4	110.2		
168	015	100481	0.3	7.5	12.1	-0.5	1.1	174.9	110.1		
169	012	100481	0.4	9.2	13.9	-0.5	1.7	191.5	112.3		
170	074			4.4			0.7	0.0	0.0		

LOT	ID	SIRE	BWT	WWT	PWWT	PFAT	PEMD	Carcass plus	Lamb 2020	MN2	PURCHASER
171	092	080238	0.4	6.6	10.8	-0.6	1.5	173.0	109.8		
172	104	120254	0.4	7.8	11.4	-0.6	1.7	179.1	110.6		
173	006	120254	0.3	7.9	11.4	-0.3	1.9	181.4	110.9		
174	023	120254	0.4	8.4	12.6	-0.4	1.6	183.4	111.2		
175	112	120254	0.4	8.3	12.6	-0.5	1.8	185.8	111.5		
176	036			5.4	8.0	-0.4	1.4	158.4	0.0		
177	039	120254	0.4	8.4	12.9	-0.2	1.6	183.5	111.2		
178	279	120254	0.5	9.9	15.4	-0.6	2.1	202.9	113.8		
179	106			4.4			1.1	0.0	0.0		
180	065	100481	0.3	7.1	11.6	-0.1	1.5	174.9	110.1		
181	240	120254	0.4	8.8	13.7	-0.2	2.4	196.2	112.9		
182	275	120254	0.2	7.8	11.4	-0.7	1.5	178.0	110.5		
183	288	120254	0.2	7.9	11.7	-0.5	1.4	177.4	110.4		
184	034	100481	0.4	8.4	13.0	-0.4	1.5	184.2	111.3		
185	124			3.4				0.0	0.0		

LOT	ID	SIRE	BWT	WWT	PWWT	PFAT	PEMD	Carcass plus	Lamb 2020	MN2	PURCHASER
186	101	100481	0.4	7.6	12.3	-0.3	1.8	182.5	111.1		
187	084	100481	0.4	9.0	14.2	-0.4	1.5	189.4	112.0		
188	259	120254	0.3	7.7	11.3	-0.2	2.1	182.7	111.1		
189	260	120254	0.3	8.8	13.0	-0.8	1.2	182.4	111.1		
190	286	120254	0.2	7.4	10.8	-0.6	1.3	173.0	109.8		
191	122	100481	0.3	8.1	12.7	-0.4	1.1	177.1	110.4		
192	052	120254	0.4	7.8	11.8	-0.2	2.2	185.9	111.5		
193	107	100481	0.3	7.6	12.2	0.1	1.7	179.6	110.7		
194	256	120254	0.2	8.0	11.7	-1.1	1.0	175.3	110.1		
195	252	120254	0.3	7.8	11.3	-0.6	1.3	175.6	110.2		
196	041	100481	0.4	8.3	12.8	-0.6	1.1	179.0	110.6		
197	152	080238	0.2	6.1	9.8	-0.6	1.4	166.6	0.0		
198	103	100481	0.4	8.4	13.1	-0.8	0.7	176.2	110.2		
199	272										
200	277	080238	0.4	5.8	9.6	-0.4	1.5	165.7	108.8		

LOT	ID	SIRE	BWT	WWT	PWWT	PFAT	PEMD	Carcass plus	Lamb 2020	MN2	PURCHASER
201	278	080238	0.3	6.8	11.3	-0.6	1.9	179.2	110.6		
202	287	080238	0.3	6.3	10.5	-0.5	1.4	169.8	109.4		
203	042	100481	0.2	7.3	11.5	-0.5	1.7	178.6	110.6		
204	114	120254	0.3	6.9	10.4	-0.5	1.2	168.5	109.2		
205	057	120254	0.4	7.5	10.9	-0.3	1.9	178.1	110.5		
206	284	080238	0.4	7.2	11.7	-0.8	1.3	175.7	110.2		
207	054	080238	0.5	6.7	10.6	-0.9	0.8	165.7	108.8		
208	250	120254	0.4	8.5	12.2	-0.2	2.0	185.9	111.5		
209	088	120254	0.3	7.4	11.6	-0.5	1.5	176.8	110.3		
210	273	120254	0.3	7.5	11.0	-0.3	2.2	181.8	111.0		
211	251	120254	0.2	7.2	10.7	-0.1	2.1	178.7	110.6		
212	113	100481	0.2	7.0	11.1	-0.5	1.2	170.8	109.5		
213	270	080238	0.3	6.0	10.1	-0.4	1.5	167.9	109.1		
214	301	080238	0.2	5.3	8.6	-0.1	2.5	171.2	109.6		
215	118	080238	0.3	5.7	9.1	-0.4	1.0	157.9	107.8		

LOT	ID	SIRE	BWT	WWT	PWWT	PFAT	PEMD	Carcass plus	Lamb 2020	MN2	PURCHASER
216	448	080238	0.3	6.2	9.9	-0.8	1.7	172.0	109.7		
217	257	120254	0.4	9.6	14.2	-0.3	2.4	201.0	113.6		
218	253	080238	0.5	6.6	10.7	-0.7	0.9	166.3	108.9		
219	282	080238	0.5	7.5	11.9	-1.0	0.5	169.5	109.3		
220	248	080238	0.4	7.0	11.6	-0.8	1.4	175.6	110.1		

HAMPSHIRE DOWNS

LOT	ID	MN2	PURCHASER
221	236	MN2	
222	607	MN2	
223	636	MN2	
224	614	MN2	
225	1452	MN2	
226	1421	MN2	
228	4608	MN2	
228	621	MN2	
229	1451	MN2	
230	1424	MN2	
231	1442	MN2	
232	637	MN2	

LOT	ID	MN2
233	606	MN2
234	619	MN2
235	1435	MN2
236	1448	MN2
237	1415	MN2
238	1410	MN2
239	1446	MN2
240	1426	MN2
241	615	MN2
242	1411	MN2
243	1455	MN2